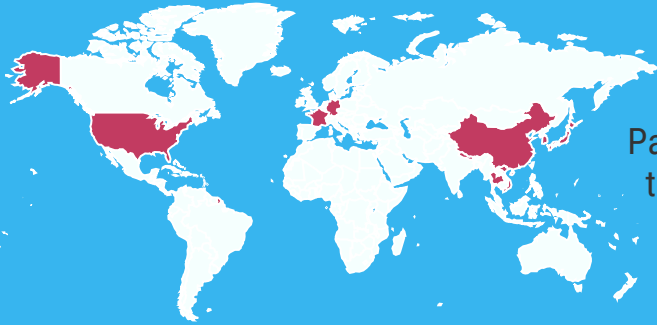


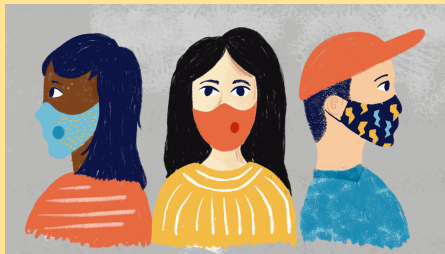
Novel Coronavirus (2019-nCoV) Advisory

Acute Respiratory infection (ARI)/Influenza like illness (ILI)/ Cluster of Pneumonia reported from Wuhan City, Hubei Province in China. It is caused by a new type of Coronavirus (novel Coronavirus, 2019-nCoV). Coronavirus are large family of viruses with some causing less severe disease such as common cold and others more severe diseases such as MERS and SARS.



Passengers coming from 2019-nCoV affected countries are to be monitored by District Surveillance Unit (DSU) for 28 days.

HOW IT SPREADS AND SYMPTOMS



How it spreads

- Person to person
- Just like normal, seasonal flu
- Inhaled droplets from coughing/sneezing
- Droplets on hands/surface

Symptoms include:



Fever



Cough



Difficulty in breathing

Incubation Period: 2- 10 days

PREVENTION



Cover nose & mouth when coughing or sneezing. Throw tissue in trash after use.



Wash your hands often with soap & water, especially after cough or sneeze.



Avoid touching eyes, nose or mouth. Virus spread that way



Stay at home if you are sick and limit contact with others.

PEOPLE AT RISK

- Older
- Young children
- Pregnant women
- Asthmatics
- Neurological conditions
- Cystic fibrosis
- Heart disease
- Blood disorders
- Diabetes
- Chronic kidney or liver disorders
- Weakened immune systems
- Cancer
- Patients on steroids
- Morbid obesity
- Chronic lung disease



PLEASE TAKE PRECAUTION

Directorate of Health Services Kashmir, India
INTEGRATED DISEASE SURVEILLANCE PROGRAMME (IDSP)



www.facebook.com/idsp.sso
Email: kadrism@outlook.com
Helpline: +919419010363/911942440283

